

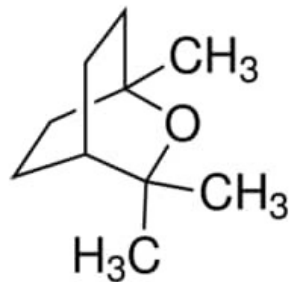
# Spectres RMN

Analyses effectuées sur un appareil 400 MHz

## Eucalyptol

CAS : 470-82-6

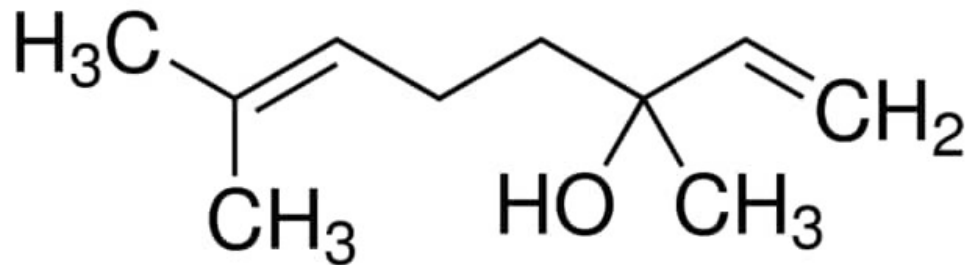
Masse molaire= 154,25 g/mol



## Linalol

CAS : 78-70-6

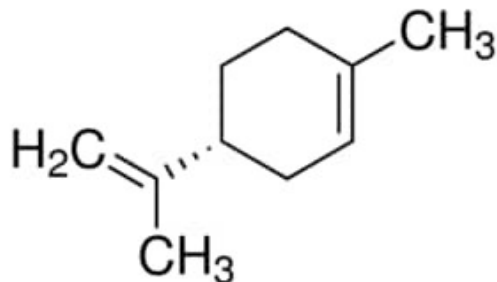
Masse molaire= 154,25 g/mol



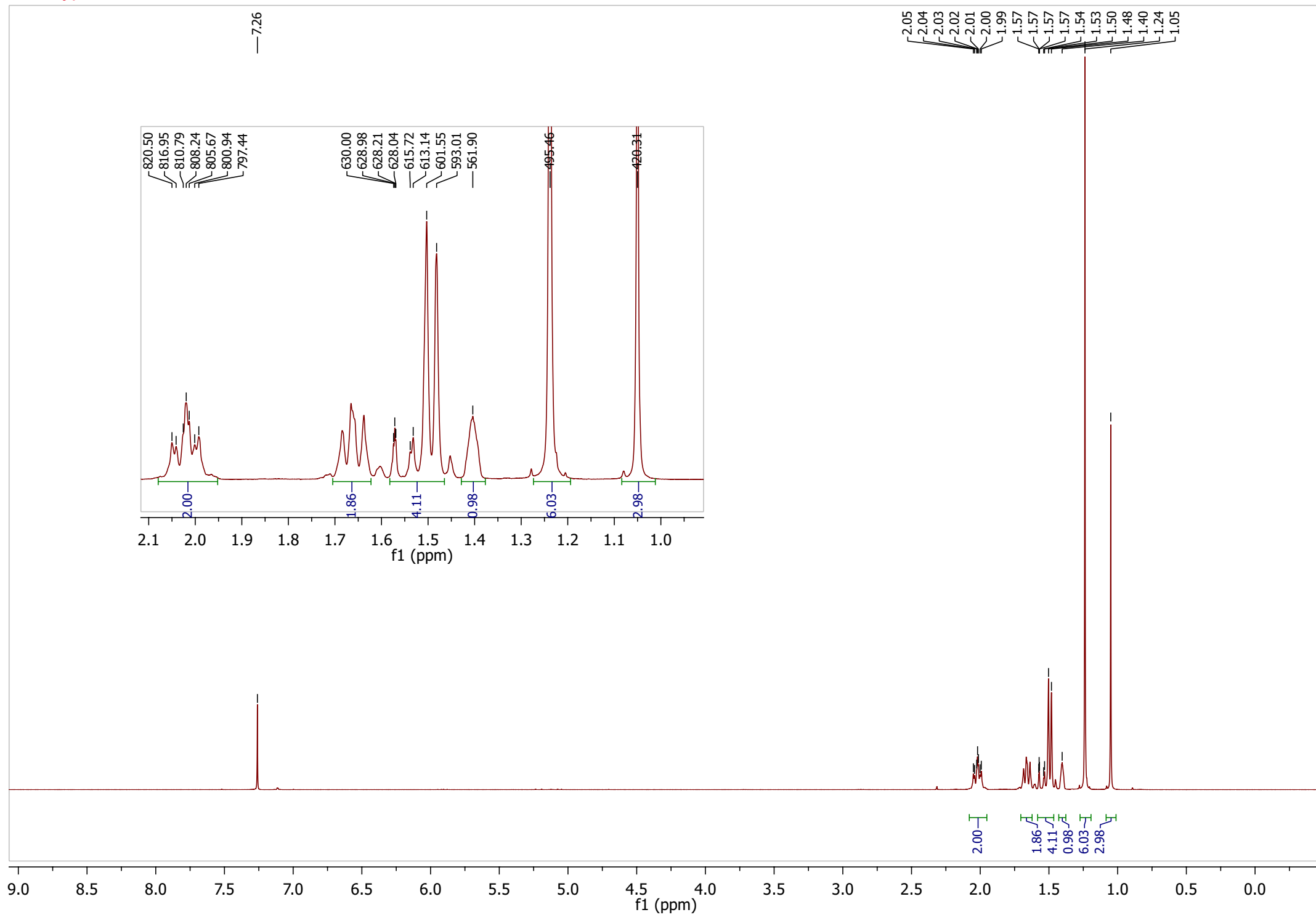
## Limonène

CAS : 5989-27-5

Masse molaire= 136,23 g/mol

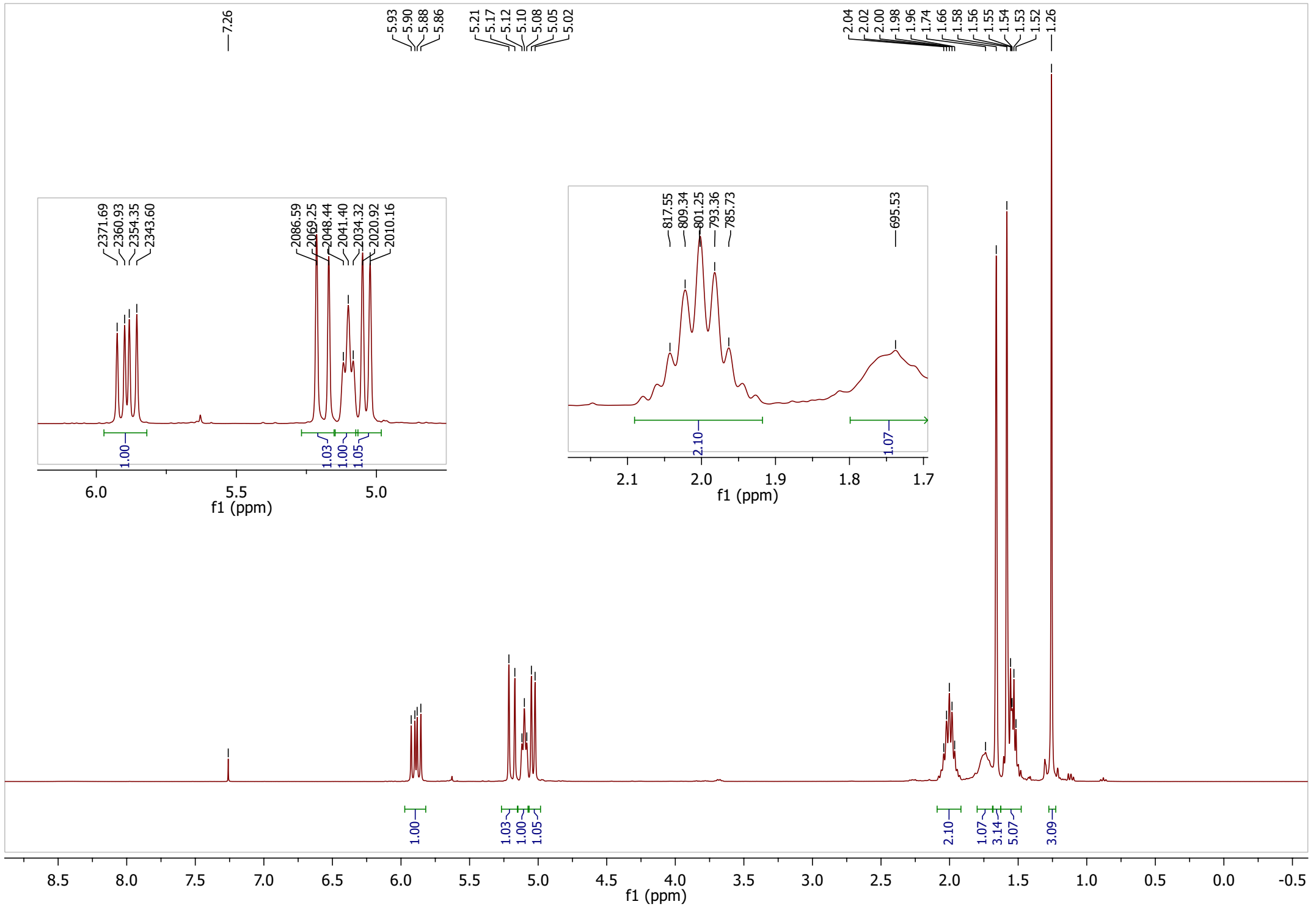


# Eucalyptol



# Linalol

le pic à 2 ppm apparait comme un pentuplet (pt) mais il s'agit plus d'un triplet de doublet (dt)



# Limonene

le pic à 1.8 ppm sort comme un triplet de doublet de doublet (ddt)

